

CURRENT TRANSDUCERS

HALL EFFECT CURRENT TRANSDUCERS

MODEL CTL

FREQUENCY RANGE DC TO 1000 HERTZ

FEATURES AND APPLICATIONS

- 2200 Volt line-to-output isolation.**
- DC to 1000 Hertz response.
- Bi-directional operation.
- Available in split-core configurations, except Model 51.
- Response time less than 100 microSeconds.
- Output is proportional in **direction and magnitude** to the current flow through the window.

- Overload capability to **50 times rating** (at 60 Hz.).
- Stability maintained during severe vibration.
- Easy installation.
- Replaces shunts.
- No insertion loss.
- For use with model CTA signal conditioners.
- Ideal for use on AC systems with dc components and/or chopped waveforms.

**1000 Volt Model 51 and Split-Core Options Models 101, 201 and 401.

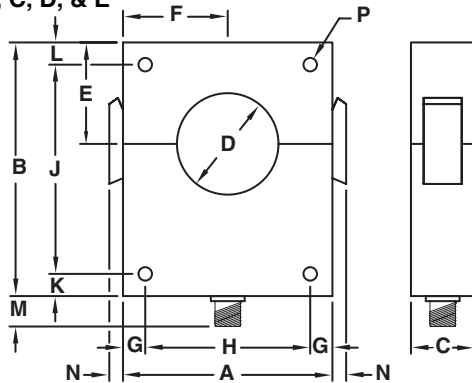
CIRCULAR WINDOW MODELS (0.5% Accuracy & Linearity)

PEAK CURRENT (A)	EXCITATION (NOMINAL) (mA)	OUTPUT (NOMINAL) (mV)	TEMPERATURE		RESISTANCE (OHMS)		SENSOR SIZE	PART NUMBER
			EFFECTS	RANGE (°C)	INPUT	OUTPUT		
35	200	35	1%	-10°C to 40°C	6	25	A	CTL-51/35
50	200	50	1%	-10°C to 40°C	6	25	A	CTL-51/50
50	200	50	1%	-10°C to 40°C	6	25	C	CTL-101/50
75	200	75	1%	-10°C to 40°C	6	25	C	CTL-101/75
100	200	100	1%	-10°C to 40°C	6	25	C	CTL-101/100
150	200	75	1%	-10°C to 40°C	6	25	D	CTL-201/150
200	200	100	1%	-10°C to 40°C	6	25	D	CTL-201/200
300	200	75	1%	-10°C to 40°C	6	25	D	CTL-401/300
400	200	100	1%	-10°C to 40°C	6	25	D	CTL-401/400
500	200	40	1%	-10°C to 40°C	23	25	E	CTL-601/500
600	200	50	1%	-10°C to 40°C	23	25	E	CTL-601/600
800	200	40	1%	-10°C to 40°C	23	25	E	CTL-202/800
1000	200	50	1%	-10°C to 40°C	23	25	E	CTL-202/1000
1500	200	75	1%	-10°C to 40°C	23	25	E	CTL-202/1500
2000	200	100	1%	-10°C to 40°C	23	25	E	CTL-202/2000
500	200	40	1%	-10°C to 40°C	23	25	F	CTL-601FS/500
600	200	50	1%	-10°C to 40°C	23	25	F	CTL-601FS/600
800	200	40	1%	-10°C to 40°C	23	25	F	CTL-202FS/800
1000	200	50	1%	-10°C to 40°C	23	25	F	CTL-202FS/1000
1500	200	75	1%	-10°C to 40°C	23	25	F	CTL-202FS/1500
2000	200	100	1%	-10°C to 40°C	23	25	F	CTL-202FS/2000
1000	200	100	1%	-10°C to 40°C	23	25	EE	CTL-202EES/1000
1500	200	150	1%	-10°C to 40°C	23	25	EE	CTL-202EES/1500
2000	200	200	1%	-10°C to 40°C	23	25	EE	CTL-202EES/2000
2500	200	75	1%	-10°C to 40°C	23	25	EE	CTL-302EES/2500
3000	200	100	1%	-10°C to 40°C	23	25	EE	CTL-302EES/3000

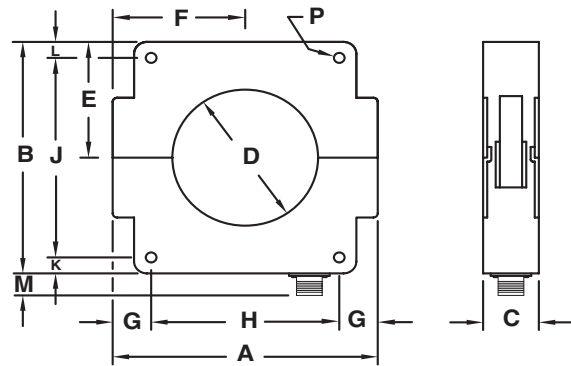


CIRCULAR MODEL CTL DIMENSIONS

Sensor A, C, D, & E



Sensor EE & F



SENS SIZE	SENSOR DIMENSIONS (Inches)														WT. LBS.
	A	B	C	D	E	F	G	H	J	K	L	M	N	P	
A	1 1/8	1 1/2	1/2	3/8	9/16	9/16	9/32	9/16	NA	3/16	NA	NA	NA	1/8	0.12
C	2	2	3/4	3/4	7/8	1	1/4	1 1/2	NA	1/4	NA	NA	1/4	5/32	0.28
D	3 1/8	4	3/4	1 1/8	1 1/2	1 9/16	1/2	2 1/8	NA	1/2	NA	3/8	1/4	11/64	0.75
E	4 1/8	5	1 1/4	2	2	2 1/16	7/16	3 1/4	4 1/8	7/16	7/16	5/8	5/16	17/64	2.0
F	5 3/8	5 1/4	1 5/8	2 1/4	2 5/8	2 11/16	1 1/16	3 1/4	4 1/8	9/16	9/16	5/8	NA	1/4	2.8
EE	7 3/4	7 1/4	1 5/8	4 1/4	3 5/8	3 7/8	1 1/8	5 1/2	6 1/4	1/2	1/2	5/8	NA	5/16	4.5

CABLE LENGTHS

Solid core models supplied with integral 18 in. cables for sensor sizes A,C,D. All others have 8' cable. Split-core models use 4 pin connector-supplied with mating connector and 8 ft. 4 conductor cable.

FLEX-CORE®

Div. Morlan & Associates, Inc.

6625 McVey Blvd. Columbus, Ohio 43235

WWW.FLEX-CORE.COM

sales@flex-core.com

PHONE (614) 889-6152

TECH. ASSISTANCE (614) 876-8308

FAX # (614) 876-8538

CURRENT TRANSDUCERS

CURRENT TRANSDUCERS

SIGNAL CONDITIONERS

MODEL CTA

FOR USE WITH MODEL CTL CURRENT TRANSDUCERS



DIRECT MEASUREMENT MODELS

- Provide output which is directly proportional to amplitude of AC and/or dc input waveform.

RMS MODELS

- Provide output which is proportional to RMS value of AC and/or dc input waveform.

MODEL CTL CURRENT TRANSDUCER (FROM PG.)	TRANSDUCER INPUT CURRENT RANGE	DIRECT MODELS OUTPUT PROPORTIONAL TO AC/DC INPUT				RMS MODELS - OUTPUT PROPORTIONAL TO RMS OF AC/DC INPUT			
		STANDARD AC/DC OUTPUTS				STANDARD DC OUTPUTS			
		+/- 5V	+/- 10V	*4-20mA	+/- 1mA	0-5Vdc	0-10Vdc	4-20mA	0-1mAdc
CTL-51/35 CTL-51/50	0-35A 0-50A	CTA201RX5 CTA201X5	CTA201R CTA201	CTA212R CTA212	CTA201RA CTA201A	CTA213RX5 CTA213X5	CTA213R CTA213	CTA215R CTA215	CTA214R CTA214
CTL-101/50 CTL-101/75 CTL-101/100	0-50A 0-75A 0-100A	CTA201X5 CTA201HX5 CTA201PX5	CTA201 CTA201H CTA201P	CTA212 CTA212H CTA212P	CTA201A CTA201HA CTA201PA	CTA213X5 CTA213HX5 CTA213PX5	CTA213 CTA213H CTA213P	CTA215 CTA215H CTA215P	CTA214 CTA214H CTA214P
CTL-201/150 CTL-201/200	0-150A 0-200A	CTA201HX5 CTA201PX5	CTA201H CTA201P	CTA212H CTA212P	CTA201HA CTA201PA	CTA213HX5 CTA213PX5	CTA213H CTA213P	CTA215H CTA215P	CTA214H CTA214P
CTL-401/300 CTL-401/400	0-300A 0-400A	CTA201HX5 CTA201PX5	CTA201H CTA201P	CTA212H CTA212P	CTA201HA CTA201PA	CTA213HX5 CTA213PX5	CTA213H CTA213P	CTA215H CTA215P	CTA214H CTA214P
CTL-601/500 CTL-601/600	0-500A 0-600A	CTA201FX5 CTA201X5	CTA201F CTA201	CTA212F CTA212	CTA201FA CTA201A	CTA213FX5 CTA213X5	CTA213F CTA213	CTA215F CTA215	CTA214F CTA214
CTL-202/800 CTL-202/1000 CTL-202/1500 CTL-202/2000	0-800A 0-1000A 0-1500A 0-2000A	CTA201FX5 CTA201X5 CTA201HX5 CTA201PX5	CTA201F CTA201 CTA201H CTA201P	CTA212F CTA212 CTA212H CTA212P	CTA201FA CTA201A CTA201HA CTA201PA	CTA213FX5 CTA213X5 CTA213HX5 CTA213PX5	CTA213F CTA213 CTA213H CTA213P	CTA215F CTA215 CTA215H CTA215P	CTA214F CTA214 CTA214H CTA214P
CTL-601FS/500 CTL-601FS/600	0-500A 0-600A	CTA201FX5 CTA201X5	CTA201F CTA201	CTA212F CTA212	CTA201FA CTA201A	CTA213FX5 CTA213X5	CTA213F CTA213	CTA215F CTA215	CTA214F CTA214
CTL-202FS/800 CTL-202FS/1000 CTL-202FS/1500 CTL-202FS/2000	0-800A 0-1000A 0-1500A 0-2000A	CTA201FX5 CTA201X5 CTA201HX5 CTA201PX5	CTA201F CTA201 CTA201H CTA201P	CTA212F CTA212 CTA212H CTA212P	CTA201FA CTA201A CTA201HA CTA201PA	CTA213FX5 CTA213X5 CTA213HX5 CTA213PX5	CTA213F CTA213 CTA213H CTA213P	CTA215F CTA215 CTA215H CTA215P	CTA214F CTA214 CTA214H CTA214P
CTL-202EES/1000 CTL-202EES/1500 CTL-202EES/2000	0-1000A 0-1500A 0-2000A	CTA201PX5 CTA201KX5 CTA201LX5	CTA201P CTA201K CTA201L	CTA212P CTA212K CTA212L	CTA201PA CTA201KA CTA201LA	CTA213PX5 CTA213KX5 CTA213LX5	CTA213P CTA213K CTA213L	CTA215P CTA215K CTA215L	CTA214P CTA214K CTA214L
CTL-302EES/2500 CTL-302EES/3000	0-2500A 0-3000A	CTA201HX5 CTA201PX5	CTA201H CTA201P	CTA212H CTA212P	CTA201HA CTA201PA	** **	** **	** **	** **

* Denotes DC input current only. **Not available in RMS models, consult factory for other models.

NOTE: Use direct models for true DC and use RMS models for AC, or AC with DC component or chopped waveform.

CTL Options

Extended Temp. Range (-40°C to 65°C) Option "-T"
Split-Core (Above 50A) Option "-S"

CTA Options

220 Vac Instrument Power 220Vac Option "-22"
DC Instrument Power 9-18Vdc Option "-12"
18-36Vdc Option "-24"
36-60Vdc Option "-48"
CTA212 4-12-20mA Output Option "Y42"

ORDERING INFORMATION

EXAMPLE: 200 Amp split-core current transducer requiring 200mA excitation, with output of 100mV.

CTL-201S/200

TO ORDER WITH MODEL CTA SIGNAL CONDITIONER

Locate transducer model number in first column.

Specify model CTA signal conditioner model number based on required analog output.

The transducer and signal conditioner must be ordered as separate items although supplied as a calibrated set.

FLEX-CORE®

Div. Morlan & Associates, Inc.

6625 McVey Blvd. Columbus, Ohio 43235

WWW.FLEX-CORE.COM

sales@flex-core.com

PHONE (614) 889-6152

TECH. ASSISTANCE (614) 876-8308

FAX # (614) 876-8538

CURRENT TRANSDUCERS

CURRENT TRANSDUCERS

HALL EFFECT CURRENT TRANSDUCERS

MODEL CTL

FREQUENCY RANGE DC TO 1000 HERTZ

FEATURES AND APPLICATIONS

- 2200 Volt line-to-output isolation.**
- DC to 1000 Hertz response.
- Bi-directional operation.
- Available in split-core configurations.
- Response time less than 100 microSeconds.
- Output is proportional in **direction and magnitude** to the current flow through the window.
- Overload capability to **50 times rating** (at 60 Hz.).
- Stability maintained during severe vibration.
- Easy installation.
- Replaces shunts.
- No insertion loss.
- For use with model CTA signal conditioners.
- Ideal for use on AC systems with dc components and/or chopped waveforms.

RECTANGULAR WINDOW (BUS BAR) MODELS *Sensor size ZZ available in split-core only.

PEAK CURRENT (A)	EXCITATION (NOMINAL) (mA)	OUTPUT (NOMINAL) (mV)	TEMPERATURE		RESISTANCE (OHMS)		LINEARITY & ACCURACY	SENSOR SIZE	PART NUMBER
			EFFECTS	RANGE (°C)	INPUT	OUTPUT			
500	200	50	1%	-10°C to 40°C	23	25	1%	Z	CTL-202H/500
1000	200	100	1%	-10°C to 40°C	23	25	1%	Z	CTL-202H/1000
1500	200	150	1%	-10°C to 40°C	23	25	1%	Z	CTL-202H/1500
2000	200	200	1%	-10°C to 40°C	23	25	1%	Z	CTL-202H/2000
2000	200	60	1%	-10°C to 40°C	23	25	1%	Z	CTL-502H/2000
2500	200	75	1%	-10°C to 40°C	23	25	1%	Z	CTL-502H/2500
3000	200	90	1%	-10°C to 40°C	23	25	1%	Z	CTL-502H/3000
4000	200	120	1%	-10°C to 40°C	23	25	1%	Z	CTL-502H/4000
5000	200	150	1%	-10°C to 40°C	23	25	1%	Z	CTL-502H/5000
1000	200	100	1%	-10°C to 40°C	23	25	1%	ZZ	CTL-202ZZS/1000*
1500	200	150	1%	-10°C to 40°C	23	25	1%	ZZ	CTL-202ZZS/1500*
2000	200	200	1%	-10°C to 40°C	23	25	1%	ZZ	CTL-202ZZS/2000*
2500	200	125	1%	-10°C to 40°C	23	25	1%	ZZ	CTL-302ZZS/2500*
3000	200	150	1%	-10°C to 40°C	23	25	1%	ZZ	CTL-302ZZS/3000*
2500	200	75	1%	-10°C to 40°C	23	25	1%	G	CTL-502/2500
3000	200	90	1%	-10°C to 40°C	23	25	1%	G	CTL-502/3000
4000	200	120	1%	-10°C to 40°C	23	25	1%	G	CTL-502/4000
5000	200	150	1%	-10°C to 40°C	23	25	1%	G	CTL-502/5000
5000	200	50	1%	-10°C to 40°C	23	25	1%	H	CTL-103/5000
6000	200	60	1%	-10°C to 40°C	12	32	1%	H	CTL-103/6000
7000	200	75	1%	-10°C to 40°C	12	32	1%	H	CTL-103/7000
8000	200	75	1%	-10°C to 40°C	12	32	1%	H	CTL-103/8000
9000	200	100	1%	-10°C to 40°C	12	32	1%	H	CTL-103/9000
10000	200	100	1%	-10°C to 40°C	12	32	1%	H	CTL-103/10000
12000	200	60	1%	-10°C to 40°C	12	32	2%	H	CTL-203/12000
15000	200	75	1%	-10°C to 40°C	12	32	2%	H	CTL-203/15000
18000	200	100	1%	-10°C to 40°C	12	32	2%	H	CTL-203/18000
20000	200	100	1%	-10°C to 40°C	12	32	2%	H	CTL-203/20000
25000	200	80	1%	-10°C to 40°C	12	32	2%	HH	CTL-303/25000
30000	200	100	1%	-10°C to 40°C	12	32	2%	HH	CTL-303/30000
35000	200	75	1%	-10°C to 40°C	12	32	2%	HH	CTL-403/35000
40000	200	100	1%	-10°C to 40°C	12	32	2%	HH	CTL-403/40000

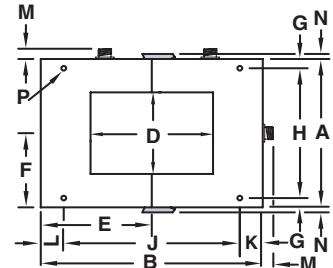
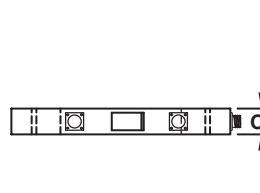
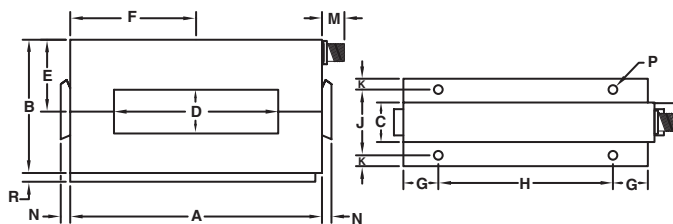


CURRENT TRANSDUCERS

RECTANGULAR MODEL CTL DIMENSIONS

Sensor Z and ZZ

Sensor G, H and HH



SENS SIZE	SENSOR DIMENSIONS (INCHES)														WT. LBS.	
	A	B	C	D	E	F	G	H	J	K	L	M	N	P		R
G	7 3/4	12	1 3/4	3 X 6 1/2	6	3 7/8	5/8	6 1/2	10 3/4	5/8	5/8	5/8	5/16	9/32	N/A	12.3
H	10	13 3/4	1 3/4	5 1/2 X 8	6 1/2	5	5/8	8 3/4	11 1/2	3/4	1 1/2	5/8	5/16	9/32	N/A	13
HH	21	21	2	13 X 13	10 1/2	10 1/2	1 1/2	18	18	1 1/2	1 1/2	5/8	11/16	3/8	N/A	22
Z	7 3/16	3 3/4	1 1/8	1 1/4 X 4 1/2	2 1/16	3 1/2	1	5	1 7/8	5/16	N/A	3/8	1/4	3/16	1/4	2.8
ZZ	7 3/16	5 1/2	1 1/8	2 7/16 X 4 1/2	2 1/2	3 1/2	1	5	1 7/8	5/16	N/A	3/8	1/4	3/16	1/4	3.5

CABLE LENGTHS

All units are supplied with a detachable 8' cable.

FLEX-CORE®

Div. Morlan & Associates, Inc.

6625 McVey Blvd. Columbus, Ohio 43235

WWW.FLEX-CORE.COM

sales@flex-core.com

PHONE (614) 889-6152

TECH. ASSISTANCE (614) 876-8308

FAX # (614) 876-8538

CURRENT TRANSDUCERS

SIGNAL CONDITIONERS

MODEL CTA

FOR USE WITH MODEL CTL CURRENT TRANSDUCERS



DIRECT MEASUREMENT MODELS

- Provide output which is directly proportional to amplitude of AC and/or dc input waveform.

RMS MODELS

- Provide output which is proportional to RMS value of AC and/or dc input waveform.

MODEL CTL CURRENT TRANSDUCER	TRANSDUCER INPUT CURRENT RANGE	DIRECT MODELS OUTPUT PROPORTIONAL TO AC/DC INPUT				RMS MODELS - OUTPUT PROPORTIONAL TO RMS OF AC/DC INPUT			
		STANDARD AC/DC OUTPUTS				STANDARD DC OUTPUTS			
		+/- 5V	+/- 10V	*4-20mA	+/- 1mA	0-5Vdc	0-10Vdc	4-20mA	0-1mAdc
CTL-202H/500 CTL-202H/1000 CTL-202H/1500 CTL-202H/2000	0-500A 0-1000A 0-1500A 0-2000A	CTA201X5 CTA201PX5 CTA201KX5 CTA201LX5	CTA201 CTA201P CTA201K CTA201L	CTA212 CTA212P CTA212K CTA212L	CTA201A CTA201PA CTA201KA CTA201LA	CTA213X5 CTA213PX5 CTA213KX5 **	CTA213 CTA213P CTA213K **	CTA215 CTA215P CTA215K **	CTA214 CTA214P CTA214K **
CTL-502H/2000 CTL-502H/2500 CTL-502H/3000 CTL-502H/4000 CTL-502H/5000	0-2000A 0-2500A 0-3000A 0-4000A 0-5000A	** CTA201HX5 CTA201WX5 CTA201NX5 CTA201KX5	** CTA201H CTA201W CTA201N CTA201K	** CTA212H CTA212W CTA212N CTA212K	** CTA201HA CTA201WA CTA201NA CTA201KA	CTA213GX5 CTA213HX5 CTA213WX5 **	CTA213G CTA213H CTA213W **	CTA215G CTA215H CTA215W **	CTA214G CTA214H CTA214W **
CTL-202ZZS/1000 CTL-202ZZS/1500 CTL-202ZZS/2000 CTL-302ZZS/2500 CTL-302ZZS/3000	0-1000A 0-1500A 0-2000A 0-2500A 0-3000A	CTA201PX5 CTA201KX5 CTA201LX5 CTA201NX5 CTA201KX5	CTA201P CTA201K CTA201L CTA201N CTA201K	CTA212P CTA212K CTA212L CTA212N CTA212K	CTA201PA CTA201KA CTA201LA CTA201NA CTA201KA	CTA213PX5 ** ** ** **	CTA213P ** ** ** **	CTA215P ** ** ** **	CTA214P ** ** ** **
CTL-502/2500 CTL-502/3000 CTL-502/4000 CTL-502/5000	0-2500A 0-3000A 0-4000A 0-5000A	CTA201HX5 CTA201WX5 CTA201NX5 CTA201KX5	CTA201H CTA201W CTA201N CTA201K	CTA212H CTA212W CTA212N CTA212K	CTA201HA CTA201WA CTA201NA CTA201KA	CTA213HX5 CTA213WX5 ** **	CTA213H CTA213W ** **	CTA215H CTA215W ** **	CTA214H CTA214W ** **
CTL-103/5000 CTL-103/6000 CTL-103/7000 CTL-103/8000 CTL-103/9000 CTL-103/10000	0-5000A 0-6000A 0-7000A 0-8000A 0-9000A 0-10000A	CTA201X5 CTA201GX5 CTA201HX5 CTA201JX5 CTA201WX5 CTA201PX5	CTA201 CTA201G CTA201H CTA201J CTA201W CTA201P	CTA212 CTA212G CTA212H CTA212J CTA212W CTA212P	CTA201A CTA201GA CTA201HA CTA201JA CTA201WA CTA201PA	CTA213X5 CTA213GX5 CTA213HX5 CTA213JX5 ** **	CTA213 CTA213G CTA213H CTA213J ** **	CTA215 CTA215G CTA215H CTA215J ** **	CTA214 CTA214G CTA214H CTA214J ** **
CTL-203/12000 CTL-203/15000 CTL-203/18000 CTL-203/20000	0-12000A 0-15000A 0-18000A 0-20000A	CTA201GX5 CTA201HX5 CTA201WX5 CTA201PX5	CTA201G CTA201H CTA201W CTA201P	CTA212G CTA212H CTA212W CTA212P	CTA201GA CTA201HA CTA201WA CTA201PA	CTA213GX5 ** ** **	CTA213G ** ** **	CTA215G ** ** **	CTA214G ** ** **
CTL-303/25000 CTL-303/30000	0-25000A 0-30000A	CTA201JX5 CTA201PX5	CTA201J CTA201P	CTA212J CTA212P	CTA201JA CTA201PA	** **	** **	** **	** **
CTL-403/35000 CTL-403/40000	0-35000A 0-40000A	CTA201WX5 CTA201PX5	CTA201W CTA201P	CTA212W CTA212P	CTA201WA CTA201PA	** **	** **	** **	** **

* Denotes DC input current only. **Not available in RMS models, consult factory for other models.

NOTE: Use direct models for true DC and use RMS models for AC, or AC with DC component or chopped waveform.

CTL Options

Extended Temp. Range (-40°C to 65°C) Option "-T"
Split-Core (Sensor Sizes C,D,E) Option "-S"

CTA Options

220 Vac Instrument Power 220Vac Option "-22"
DC Instrument Power 9-18Vdc Option "-12"
18-36Vdc Option "-24"
36-60Vdc Option "-48"
CTA212 4-12-20mA Output Option "Y42"

ORDERING INFORMATION

EXAMPLE: 2000 Amp split-core current transducer requiring 200mA excitation, with output of 200mV.

CTL-202HS/2000

TO ORDER WITH MODEL CTA SIGNAL CONDITIONER

Locate transducer model number in first column.

Specify model CTA signal conditioner model number based on required analog output.

The transducer and signal conditioner must be ordered as separate items although supplied as a calibrated set.

FLEX-CORE®

Div. Morlan & Associates, Inc.

6625 McVey Blvd. Columbus, Ohio 43235

WWW.FLEX-CORE.COM

sales@flex-core.com

PHONE (614) 889-6152

TECH. ASSISTANCE (614) 876-8308

FAX # (614) 876-8538

CURRENT TRANSDUCERS

CURRENT TRANSDUCERS

SIGNAL CONDITIONERS

MODEL CTL/CTA

MODEL CTA SPECIFICATIONS

INPUT

Standard	0-50mV	Option "W"	0-90mV
Option "R"	0-35mV	Option "P"	0-100mV
Option "F"	0-40mV	Option "N"	0-120mV
Option "G"	0-60mV	Option "K"	0-150mV
Option "H"	0-75mV	Option "L"	0-200mV
Option "J"	0-80mV		

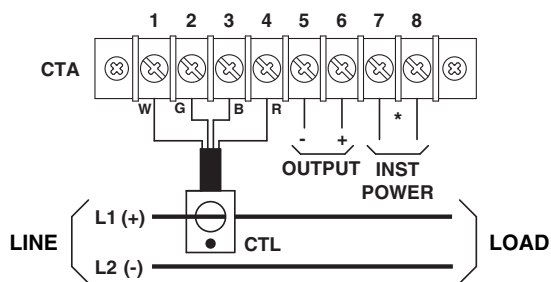
Frequency Range	dc - 1000 Hz
Instrument Power	115Vac, 50 - 400Hz, 2VA
Option "-22"	230Vac, 50/60Hz, ±15%
DC Instrument Power	
Option "-12"	9-18Vdc
Option "-24"	18-36Vdc
Option "-48"	36-60Vdc

OUTPUT

LINEARITY	± 0.1% F.S.
Output Ripple	Less than 0.25% F.S.
Field Adjustable Gain	25%
Output Loading (OHMS)	
1mA	0-10K
10V, 5V	2K min.
4-20mA	0-500
Response	(90%)
Direct models	40 microSeconds
RMS Models	200 milliSeconds
Temperature Effect.....(0°C to 70°C)	± 0.005%/°C

CONNECTION DIAGRAMS

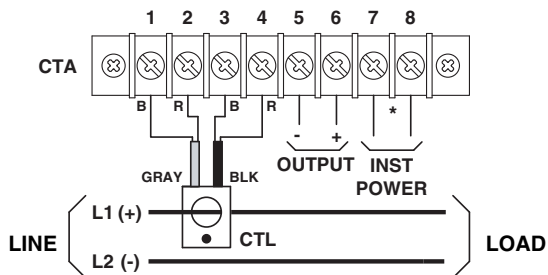
CTL MODELS WITH ONE CABLE



White sensor output signal (-)
 Green sensor output signal (+)
 Black sensor excitation (-)
 Red sensor excitation (+)

*DC Inst. Pwr. positive on Term. 8 All shields tied to terminal 3

CTL MODELS WITH TWO CABLES



GRAY CABLE BLACK CABLE
 Black sensor output signal (-) Black sensor excitation (-)
 Red sensor output signal (+) Red sensor excitation (+)

*DC Inst. Pwr. positive on Term. 8 All shields tied to terminal 3

OUTPUT CABLE DESIGNATIONS

SENSOR SIZE E, EE, F, G, H, HH

PINS	COLOR	SIGNAL
A	WHITE	OUTPUT (-)
B	GREEN	OUTPUT (+)
C	BLACK	EXCITATION (-)
D	RED	EXCITATION (+)
E	SHIELD	SHIELD

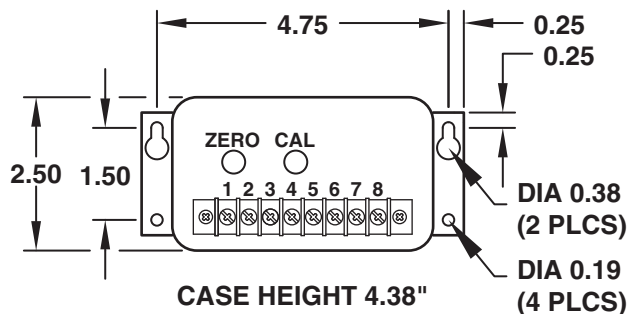
Red dot side of CTL must face positive supply.

SENSOR SIZE C, D, Z, & ZZ

PINS	COLOR	SIGNAL
1	WHITE	OUTPUT (-)
2	GREEN	OUTPUT (+)
6	BLACK	EXCITATION (-)
8	RED	EXCITATION (+)

Red dot side of CTL must face positive supply.

CASE DIMENSIONS



CASE HEIGHT 4.38"
1.4 LBS

All Dimensions in Inches

FLEX-CORE®

Div. Morlan & Associates, Inc.

6625 McVey Blvd. Columbus, Ohio 43235

WWW.FLEX-CORE.COM

sales@flex-core.com

PHONE (614) 889-6152

TECH. ASSISTANCE (614) 876-8308

FAX # (614) 876-8538