

# CURRENT TRANSFORMERS

## SPLIT-CORE CURRENT TRANSFORMERS

MODEL CTX

### 5 VOLTS AC OUTPUT

#### APPLICATIONS

The CTX series of current sensors were designed to measure non-contact AC current and provides an AC voltage output.

#### SPECIFICATIONS

The Model CTX series of current sensors use an interleaving of nickel steel laminations to provide a high accuracy non-contact current measurement.

There are ten models with high standard current ranges and window sizes. The standard ranges are available from 0 to 50 amperes through 0 to 1000 amperes. Optional ranges are available by consulting the factory.

The sensors are dipped in a plastic coating for durability.

Each current sensor has an internal load resistor and is calibrated at the factory to provide 5Vac output at the full scale input current. The internal resistor eliminates the problem of opening the secondary under load which could cause a high voltage condition on the output.

Accuracy .....  $\pm 0.5\%$  F.S.

Linearity .....  $\pm .25\%$  F.S.

Loading on output for  $<.1\%$  change in output ....  $\geq 200K$  Ohms

#### INSTALLATION

Before installing, turn off all associated power sources.

Separate the sensor by placing your fingers on each half and pull apart. Place the largest side around the cable and insert the interleaf back into the sensor, "observe direction of the lamination". Note the secondary leads do not have to be terminated at this time. **X1 = White X2 = Black**

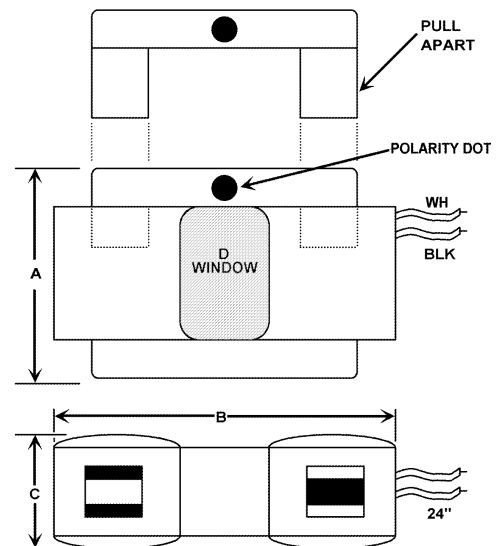


Model CTX-XXXX



Model CTX-XXXX XLS

#### CTX SENSOR DIMENSIONS



All Dimension in Inches.

MODEL	AC Current	Output	Load (Ohms)	Color	A	B	C	D
CTX-50S	50	5Vac	200	Blue	1 11/16	2 1/2	1	7/16
CTX-100S	100	5Vac	100	Black	1 11/16	2 1/2	1	7/16
CTX-200S	200	5Vac	75	Yellow	2 1/8	3 1/8	1 1/4	3/4
CTX-300S	300	5Vac	50	Yellow	2 1/8	3 1/8	1 1/4	3/4
CTX-400S	400	5Vac	75	Red	2 1/2	3 3/8	1 1/4	1 1/4
CTX-500S	500	5Vac	60	Red	2 1/2	3 3/8	1 1/4	1 1/4
CTX-600S	600	5Vac	50	Black	3 1/4	3 3/4	1 1/4	1 9/16 x 2
CTX-600XLS	600	5Vac	50	Green	4 1/8	4 5/8	1 1/4	2 1/2 x 2 3/4
CTX-800XLS	800	5Vac	37.5	Green	4 1/8	4 5/8	1 1/4	2 1/2 x 2 3/4
CTX-1000XLS	1000	5Vac	30	Green	4 1/8	4 5/8	1 1/4	2 1/2 x 2 3/4

NOTE: Other voltage outputs available (.333V, 1V, 2V, 3V)

Optional 10' Cable Available.

**FLEX-CORE®**

Div. Morlan & Associates, Inc.

6625 McVey Blvd. Columbus, Ohio 43235

WWW.FLEX-CORE.COM

flexcore@msn.com

PHONE (614) 889-6152

TECH. ASSISTANCE (614) 876-8308

FAX # (614) 876-8538