

POTENTIAL TRANSFORMERS

LOW VOLTAGE POTENTIAL TRANSFORMERS

MODEL 456

FEATURES

600V CLASS

- **FREQUENCY:** 60 Hz
- **STANDARD SECONDARY VOLTAGE:** 120 Volts
- **INSULATION LEVEL:** 0.6 kV, BIL 10 kV full wave
- **ACCURACY CLASS:** 0.3 W, X, M and 0.6Y
- **THERMAL RATING:** 500 VA at 30°C amb., 300 VA at 55°C amb.

All models on this page
UL recognized



E93779



LR89403



MODEL 456 SPECIFICATIONS

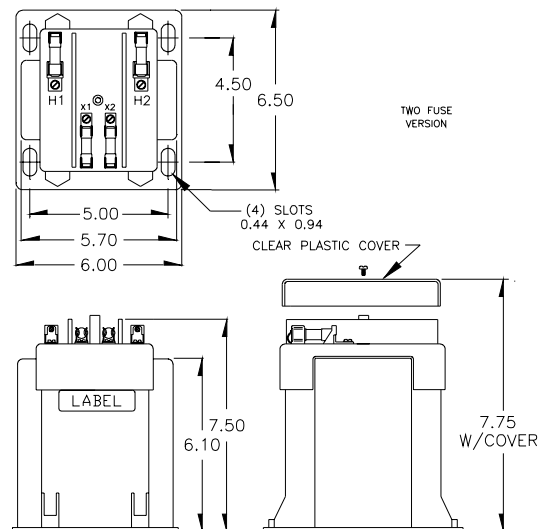
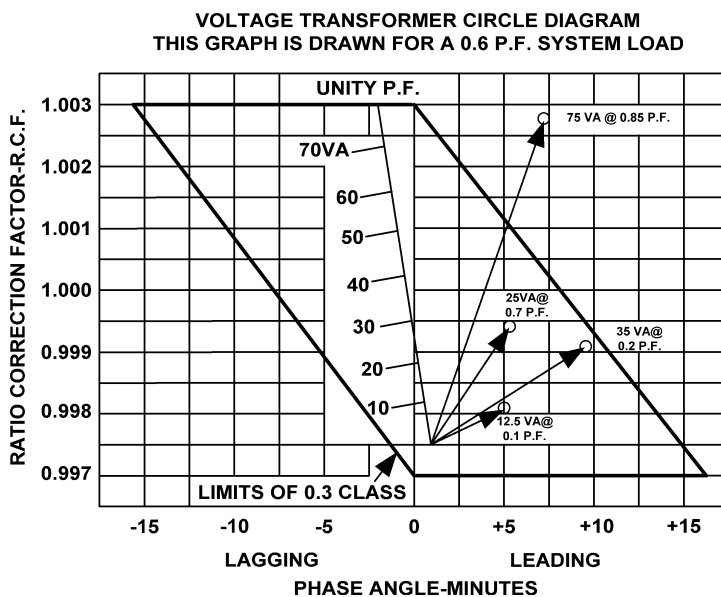
- The primary and secondary terminals are No. 10-32 screws into 3/8" deep brass inserts and fitted with one lockwasher & one flat washer and are contained in a sealable terminal cover.
- The core and coil assembly is encased in a thermoplastic shell and filled with resin.
- These transformers are designed for operation line-to-line. They may also be operated line-to-ground or line-to-neutral, at reduced voltage, (58% of rated volts).
- It is desirable to use a 5.0 amp fuse in the secondary to protect the transformer.
- With three exceptions these transformers are ANSI C57.13 group 1. Those marked * are group 2.
- IEC Rated models are available.
- Fuse blocks containing type KTK-R (class CC) fuses can be fitted.
- When primary fuses are requested, the ratings will be as given in the table.
- This page contains a circle diagram for the estimation of the errors for other than rated burdens.
- When only one fuse is used, it must be connected into the line side (H1) terminal wiring. This will prevent the presence of voltage at the H1 terminal for a ruptured fuse in the neutral (H2) terminal wiring for line-to-neutral connected transformers.
- Approximate weight: 25lbs. Model 456

APPLICATION AND ORDERING DATA

Voltage Rating	Turns Ratio	Catalog Numbers			Primary Fuse Rating
		Not Fused	1-Fuse	2-Fuses	
69.4:120	0.58:1	456-069	456-069F	456-069FF	12A
120:120	1:1	456-120	456-120F	456-120FF	10A
208:120	1.73:1	456-208	456-208F	456-208FF	6A
240:120	2:1	456-240	456-240F	456-240FF	6A
277:120	2.31:1	456-277	456-277F	456-277FF	6A
288:120	2.4:1	456-288	456-288F	456-288FF	5A
300:120	2.5:1	456-300	456-300F	456-300FF	4A
480:120	4:1	*456-480	*456-480F	*456-480FF	3A
600:120	5:1	*456-600	*456-600F	*456-600FF	2A

Retro Fit Fuse Kit Order No. 0222 PL 7019

MODEL 456 DIMENSIONS (INCHES)



ALL DIMENSIONS IN INCHES

FLEX-CORE®

Div. Morlan & Associates, Inc.

6625 McVey Blvd. Columbus, Ohio 43235

WWW.FLEX-CORE.COM

flexcore@msn.com

PHONE (614) 889-6152

TECH. ASSISTANCE (614) 876-8308

FAX # (614) 876-8538