

# CURRENT SWITCHES

## DC CURRENT PRESENT DETECTOR

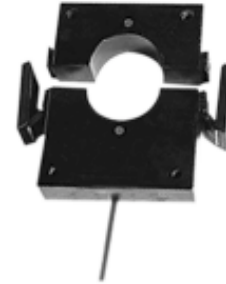
MODEL CPD-4615

### FEATURES

- Detection range 1A to 3 Amps
- Adjustable Setpoint
- Split Core
- 24Vdc operation
- Open collector output
- Over current > 100 Amps

### DESCRIPTION

The Model CPD-4615 current present detector was designed to detect small dc or peak ac currents and provide a switched transistor output. The CPD-4615 is a split core Hall effect current sensor, which can be clamped around a current carrying conductor up to one inch in diameter.



### CPD-4615 SPECIFICATIONS

#### INPUT

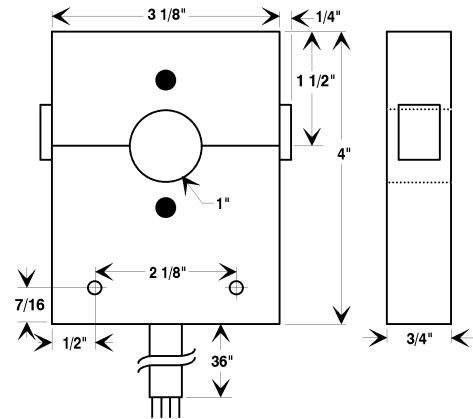
Current ..... (trip point range) .....  $\leq 3$  Amps dc  
 Adjustable range ..... 1.0 to 3 Amps dc  
 Current overload ..... 100 Amps  
 Instrument power ..... 24Vdc  $\pm 5$ Vdc @ <25mA  
 Response time ..... 90% ..... 1mSec

#### OUTPUT

Rating ..... 30V @ 0.05A  
 Open drain ..... MOS FET Transistor  
 Analog Signal ..... 8.5Vdc Max.  
 Temperature effects .. (-10°C to +50°C)...Gain ..... typ  $\pm 0.3A$   
 Offset ..... typ  $\pm 0.4A$   
 Set Point @ 25°C at (Factory) ..... 1A  $\pm 0.5A$   
 Residual ..... (100A>0) ..... 0.5A  
 Sensor ..... Size ..... 3 5/8" X 4" X 3/4"  
 Window Dia. .... 1"  
 Cable Length ..... 36"  
 Housing ..... ABS Plastic

NOTE: Available in 12Vdc Instrument Power Version (Add Suffix Y01)

### CPD-4615 DIMENSIONS



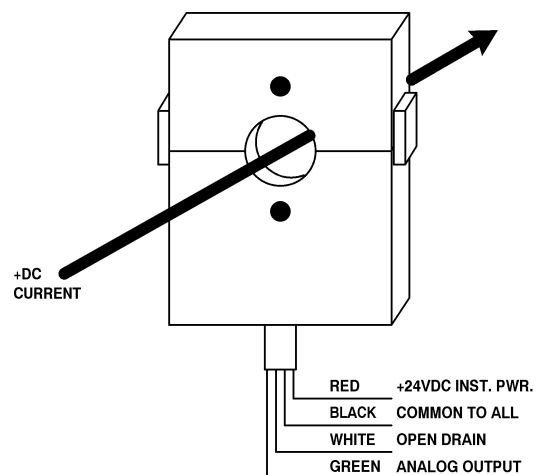
ALL DIMENSIONS IN INCHES

### CPD-4615 CONNECTIONS

#### \* NOTE:

Connect 2400 Ohms resistor from +24V to open drain.  
 Voltage output from open drain to common. (Open Collector)

Observe the side polarities and the input polarity; red dots go toward the most positive terminal. Make sure there is no foreign material in between the halves. Next, make the cable connections as shown in the diagram. There are two outputs from the sensor, the open collector and the analog output. The analog output is used to set the sensitivity or trip point.



CURRENT SWITCHES