

VOLTAGE TRANSDUCERS

AC VOLTAGE TRANSDUCER

MODEL MVT

DIN RAIL MOUNTED AC VOLTAGE TRANSDUCER

FEATURES

- Ruggedized Polyamide DIN mount case.
- Slim profile allows maximum use of available space.
- Field selectable analog outputs.
- Recessed terminals provide increased safety.

APPLICATIONS

- Ideal for use in enclosures with dimensional constraints.
- Designed for industrial environments.
- OEM measurement systems.
- Designed for use with potential transformers.
- Easily integrated into control systems.

INPUT	STANDARD OUTPUTS MODEL MVT-		
	0-1mA*	4-20mA	4-20mA**
AC VOLTAGE			
0 to 150	150A	150E	150E2
0 to 300	300A	†300E	300E2
0 to 600	†600A	†600E	†600E2

† Not UL Listed.

*Models are self-powered from measured AC input line with **DIP switch selectable 0-1mA, 0-5Vdc, or 0-10Vdc output.**

**Denotes 4-20mA loop-powered unit, (15-35Vdc).

All other units require 85-135 VAC instrument power.
1" wide case can be mounted on Rail EN50035 (DIN 1)
or Rail EN50022 (DIN3).

Transducer output is derived from the absolute value of the input and calibrated as the RMS value of a sine wave input.



MODEL MVT SPECIFICATIONS

INPUT

Voltage See Table
Frequency Range 48 to 65Hz.;60Hz. Nom.
Burden 150V models: 1.0VA
..... 300V,600V models: 2.0VA
Voltage Overload
Full scale rating
Dielectric Test...(Input/Output) 1500VAC

OUTPUT

Output Ripple Less than 1.0% F.S.
Response Time...(99%) 400 milliseconds
Field Adjustable Span ± 5%

Output Loading (OHMS)

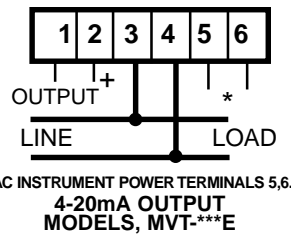
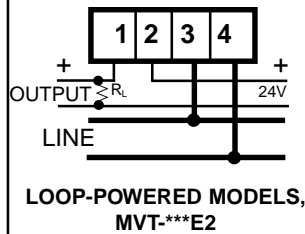
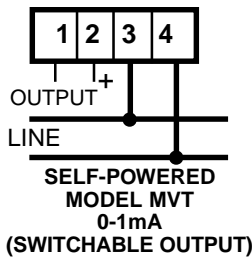
4-20mA 0-500
4-20mA (24V Loop Power) 0-600
Field Selectable
0-1mA 0-10k
0-5Vdc Greater than 5M
0-10Vdc Greater than 10M

ACCURACY (@ 60Hz.) ±0.25% F.S.
Includes effects of linearity and setpoint(10% to 100% F.S.)
Temperature Effect...(-20°C to 65°C) ± 1.0%
Instrument Power

..... 85-135VAC 50-400Hz. , 3.5VA(4-20mA)
..... 15-40Vdc (Loop Powered)

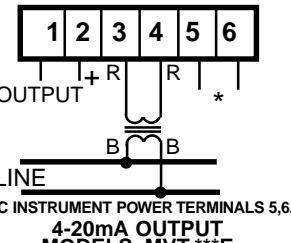
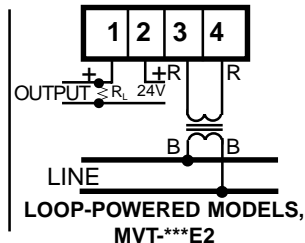
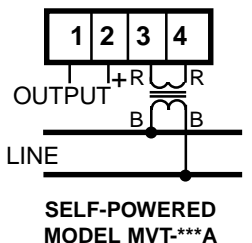
CONNECTION DIAGRAMS

150 AND 300VAC MODELS

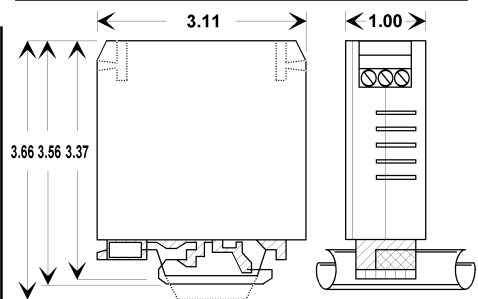


POTENTIAL TRANSFORMERS: Connect as shown in 600V diagram.

600VAC MODELS



CASE DIMENSIONS



ALL DIMENSIONS IN INCHES

OUTPUT SWITCH POSITIONS

OUTPUT REQUIRED	SWITCH POS. 1	SWITCH POS. 2
0-1mA	OFF	OFF
0-5V	ON	ON
0-10V	ON	OFF

Option "A" Models Only

TWO POSITION SWITCH LOCATED BEHIND CENTER CAP ON FRONT OF UNIT.

FLEX-CORE®

Div. Morlan & Associates, Inc.

6625 McVey Blvd. Columbus, Ohio 43235

WWW.FLEX-CORE.COM

flexcore@msn.com

PHONE (614) 889-6152

TECH. ASSISTANCE (614) 876-8308

FAX # (614) 876-8538