

ACCESSORIES

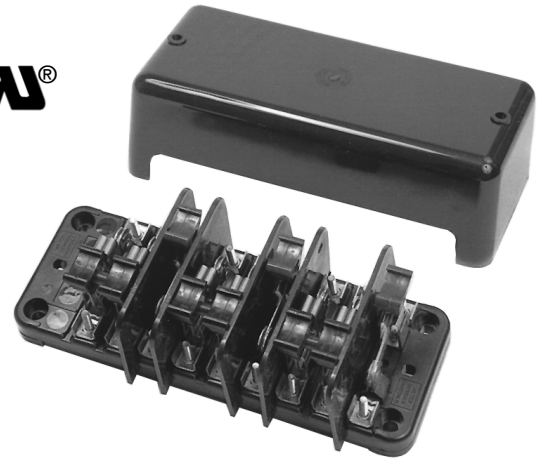
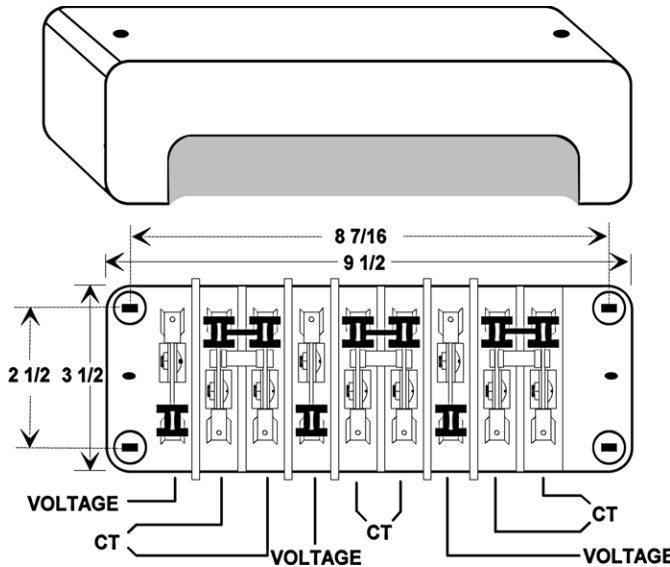
VOLTAGE AND CURRENT SWITCH ASSEMBLY *MODEL U3889*

VOLTAGE DISCONNECT AND CURRENT TRANSFORMER SHUNT FOR 3 PHASE VOLTAGES & 3 CURRENT TRANSFORMERS

- UL recognized

This switch assembly is designed to provide a disconnecting means for your watt transducer or meter. Not only can this switch assembly provide isolation from line voltages, it also will short out current transformer secondaries to prevent transformer damage which may occur when the circuit is opened under load.

SWITCH DIMENSIONS 9 1/2" X 3 1/2" X 2 3/4"
COVER DIMENSIONS 10 1/8" X 4 5/8" X 3 1/8"



MODEL U3889/209PF

- 3 Phase Switch Assembly
- 30 Amp Rated
- 600 V AC

The bottom side of the switch is connected to the circuits being measured. The top side of the switch is connected to the watt transducer or meter. The switch handles are color coded red for voltage and black for current. The black plastic cover is constructed so that all switches must be in the closed position before the cover can be sealed.

ACCESSORIES

FUSE BLOCK / FUSES

MODEL KLK

FEATURES

- 600V - 30 Amp Base
- FUSES INCLUDED
- 1, 2, or 3 Pole
- Fuse Block supplied with fuse cover

SPECIFICATIONS

- Base, high impact thermoplastic (125°C)
- Flammability Rating 94V-0
- Clip, Copper Alloy, Tin Plated
- Midget Fuses - 3Amp
- UL Recognized - CSA Certified
- Base Dimensions ... 2.35" X 3.13" X 1.29" 3 Pole
1.60" X 3.13" X 1.29" 2 Pole
.85" X 3.13" X 1.29" 1 Pole



Fuse Cover With Fuse Puller



KLK1



KLK2



KLK3



ORDERING INFORMATION

KLK-1	1 POLE
KLK-2	2 POLE
KLK-3	3 POLE

FLEX-CORE®

Div. Morlan & Associates, Inc.

6625 McVey Blvd. Columbus, Ohio 43235

WWW.FLEX-CORE.COM

sales@flex-core.com

PHONE (614) 889-6152

TECH. ASSISTANCE (614) 876-8308

FAX # (614) 876-8538