

# CURRENT TRANSFORMERS

## REMOVABLE LEG CURRENT TRANSFORMER MODEL 615

### FEATURES

- UL Recognized
- Window I.D. - 1.31" X 1.66"
- For Use with Instrumentation Equipment

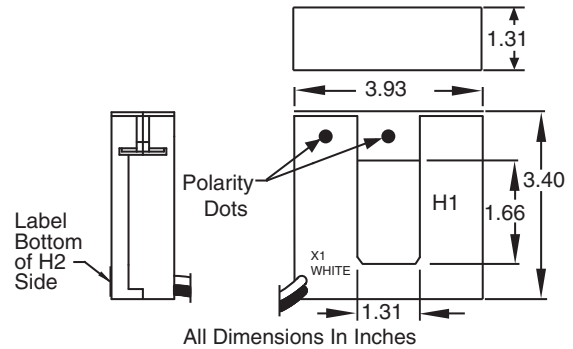
### SPECIFICATIONS

Frequency ..... 50-400Hz  
 Insulation Class ..... 0.6kV, 10kV BIL Full Wave  
 Flexible leads..... UL1015 105°C, 16 AWG, 36" long.  
 Weight ..... Approximately 1.0 Lb.  
 Continuous Thermal Current Rating Factor  
 1.33@ 30°C Amb., 1.00@55°C Amb.

### 600V CLASS



### MODEL 615 DIMENSIONS



APPLICATION AND ORDERING DATA			
CATALOG NUMBER	CURRENT RATIO	ACCURACY	BURDEN
615-101	100:5	5%	1.0VA
615-151	150:5	5%	1.0VA
615-201	200:5	3%	2.0VA
615-251	250:5	2.5%	2.0VA
615-301	300:5	1%	3.5VA
615-401	400:5	1%	8.5VA

## REMOVABLE LEG CURRENT TRANSFORMER MODEL 616

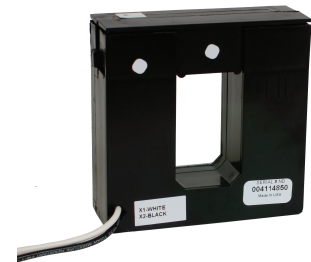
### FEATURES

- UL Recognized
- Window I.D. - 1.31" X 2.16"
- For Use with Instrumentation Equipment

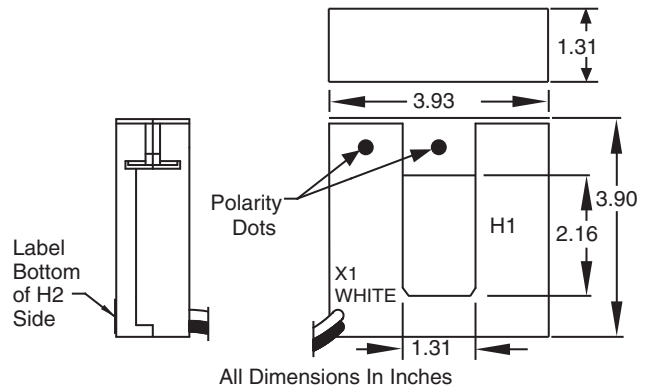
### SPECIFICATIONS

Frequency ..... 50-400Hz  
 Insulation Class ..... 0.6kV, 10kV BIL Full Wave  
 Flexible Leads..... UL1015 105°C, 16 AWG, 24" long.  
 Weight ..... Approximately 1.2 Lbs.  
 Continuous Thermal Current Rating Factor  
 1.33@ 30°C Amb., 1.00@55°C Amb.

### 600V CLASS



### MODEL 616 DIMENSIONS



APPLICATION AND ORDERING DATA			
CATALOG NUMBER	CURRENT RATIO	ACCURACY	BURDEN
616-201	200:5	3%	2VA
616-301	300:5	2%	3VA
616-401	400:5	1%	5VA
616-501	500:5	1%	5VA
616-601	600:5	1%	5VA
616-801	800:5	1%	5VA

<b>FLEX-CORE®</b> Div. Morlan & Associates, Inc. 4970 Scioto Darby Rd. Hilliard, Ohio 43026	<a href="http://WWW.FLEX-CORE.COM">WWW.FLEX-CORE.COM</a> sales@flex-core.com	PHONE (614) 889-6152 TECH. ASSISTANCE (614) 876-8308 FAX # (614) 876-8538
---------------------------------------------------------------------------------------------------	---------------------------------------------------------------------------------	---------------------------------------------------------------------------------