

CURRENT TRANSFORMERS

HIGH ACCURACY CURRENT TRANSFORMER

MODEL JAK-0S

FEATURES

- Maximize revenue metering accuracy with special high accuracy rating extended beyond IEEE requirements.
- Simplify CT selection and billing multipliers, improving productivity and minimizing risk of error
- Reduce inventory and part number requirements, reducing asset and operational costs
- Window I.D. - 3.062"

APPLICATIONS

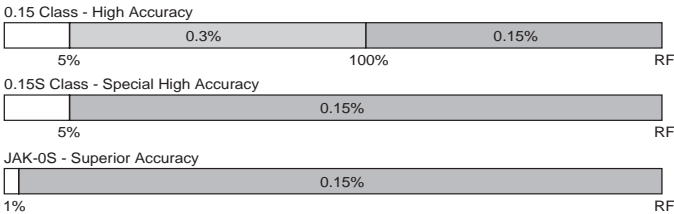
JAK-0S is a revenue metering current transformer which maintains IEEE 0.15 accuracy class from 1% of rated current up through rating factor. This is accomplished using the specialized amorphous core material which minimizes electrical core losses. The result is an extremely accurate CT that can maintain high accuracy over a extended range of current. Model JAK-0S is designed for indoor service. Optional Bar Kits available, see application table.



600V CLASS

SPECIFICATIONS

Frequency 50-60Hz
 Insulation Class 0.6kV, 10kV BIL Full Wave
 Weight
 Transformer Approximately 9 Lbs.
 Primary Bar Add 3 Lbs.



CONSTRUCTION DETAILS

Construction and Insulation

The core and coil assembly is encapsulated in resin within a molded case. The case is molded with Valox thermoplastic polyester resin. This tough material has excellent electrical and mechanical properties over a wide temperature range, has low water absorption and is resistant to oil and a variety of chemicals. The polyurethane resin filling completely encapsulates the winding, leads and terminals to form a waterproof unit.

Core and Coils

The core is manufactured with high-efficiency material that reduces energy losses, allowing for higher accuracy over a wider range. The secondary winding is made of heavy enameled copper wire evenly distributed around the core for maximum accuracy and resistance to stray fields from adjacent conductors.

Terminals

Secondary terminals are tin plated brass, compression type with a 0.275" diameter cross-hole for wiring and a 1/4-28 clamp screw. A shorting device is provided and interlocked to the terminal cover. The terminal cover is made of a clear plastic. Provision is made for sealing the cover.

Polarity

The H1 polarity mark is indented into the body, above the window at one end. The X1 polarity mark is also molded into the body adjacent to the secondary terminal. Both marks are white for visibility.

Nameplates

The nameplate is laser engraved aluminum. It is attached to the top of the unit. The nominal current rating is marked on the side of the unit in large numerals.

Primary Bars (Optional)

Formed from flat copper bar, they are tin-plated. They can be supplied mounted to the transformer, or separately for assembly into window-type units; they can be rotated to bring the terminal pads into any orientation. The bar is supported and held in place by two end plates, which act as small animal barriers. One plate is permanently attached to the bar; the other has a slot allowing it to be slipped over the bar where it is held in place by two setscrews. Holes in the plate allow ventilation and drainage of any water which might accumulate in the window. A potential connector is provided, adjacent to the fixed end plate.

Baseplate and Mounting

The transformer can be mounted in any position and may be suspended from the bus-bar or cable. The base is made from stainless steel.

Maintenance

These transformers require no maintenance, other than occasional cleaning, if installed where air contamination is severe.

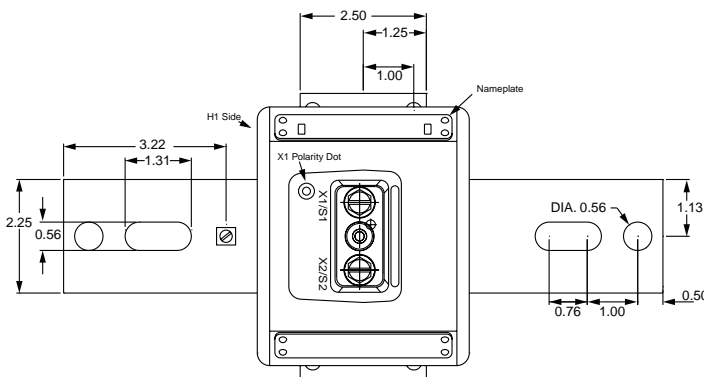
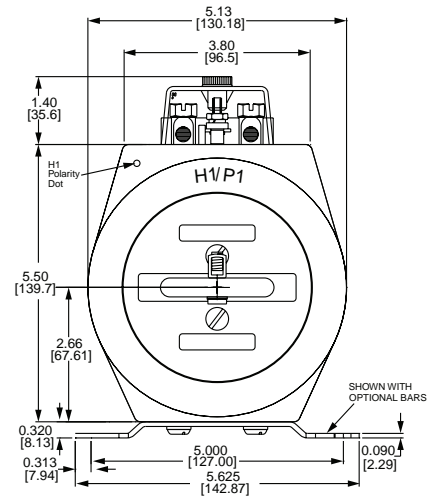
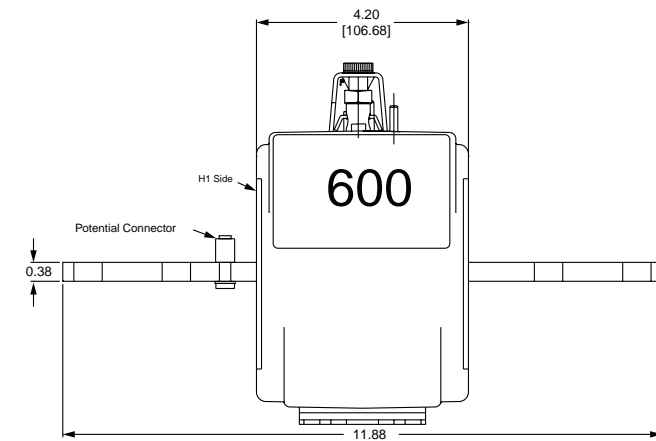
CURRENT TRANSFORMERS

HIGH ACCURACY CURRENT TRANSFORMER

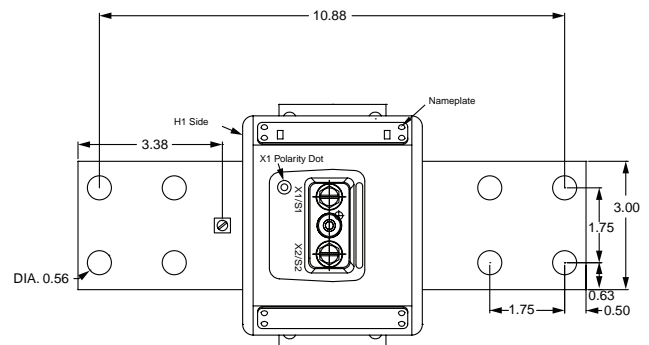
MODEL JAK-0S

APPLICATION AND ORDERING DATA							
CATALOG NUMBER	11.88" PRIMARY BAR ASSEMBLY	CURRENT RATIO (AMPS) PRI:SEC	CONTINUOUS THERMAL RATING FACTOR		WINDOW I.D. (INCHES)	DEPTH (INCHES)	MAX BURDEN FOR 0.15% ACCURACY 1% - RF
LOW BASE			@30°C	@55°C			
WINDOW STYLE, NO PRIMARY BAR, SINGLE RATIO							
750X333012	0821C34762-4	600:5	2.0	1.5	3.062	4.20	B0.5
750X333016	0821C34762-10	1000:5	2.0	1.5	3.062	4.20	B0.5

DIMENSIONS



0821C34762-4
PRIMARY BAR ASSEMBLY



0821C34762-10
PRIMARY BAR ASSEMBLY

All Dimensions In Inches (mm)

FLEX-CORE®

Div. Morlan & Associates, Inc.

4970 Scioto Darby Rd. Hilliard, Ohio 43026

WWW.FLEX-CORE.COM

sales@flex-core.com

PHONE (614) 889-6152

TECH. ASSISTANCE (614) 876-8308

FAX # (614) 876-8538